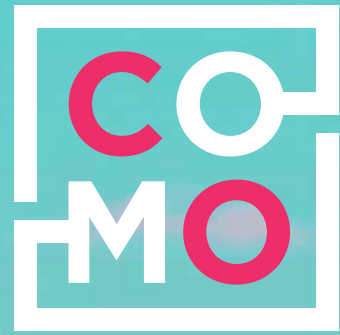


COASTAL MODERN LIVING  
by the lake





# Coastal Modern Living by the lake



EMBRACE THE PACE OF COASTAL MODERN

LIVING ALONG THE SHORES OF STONEY CREEK

Start your adventure with a lakeside lifestyle that keeps you in easy reach of boutique shops, unique restaurants and an arts and entertainment community that has everyone in the know heading to #HamOnt. Whether enjoying your coffee while overlooking the waterfront, setting your personal best along the trails of the Niagara escarpment, or indulging in shopping therapy along Hamilton's famed James Street North or Locke Street - the ingredients for your perfect day are endless at CoMo. There's no fear of missing out on everything life has to offer at CoMo, because **#NoFoMo** is the **CoMo M.O.**





Rendering is artist's concept.

# COAST WITH THE MOST

## COASTAL MODERN DESIGN IS RISING ALONG THE SHORES OF STONEY CREEK

The unique architecture of CoMo Condos captures the essence of lakeside living with a natural colour scheme and contemporary stone and brick accents that blend seamlessly into the surrounding area. The feeling of coastal modern living extends to suites that invite the lake breeze indoors with spacious windows, balconies and upper terraces, offering residents spectacular views of their new backyard overlooking the waters of Lake Ontario.

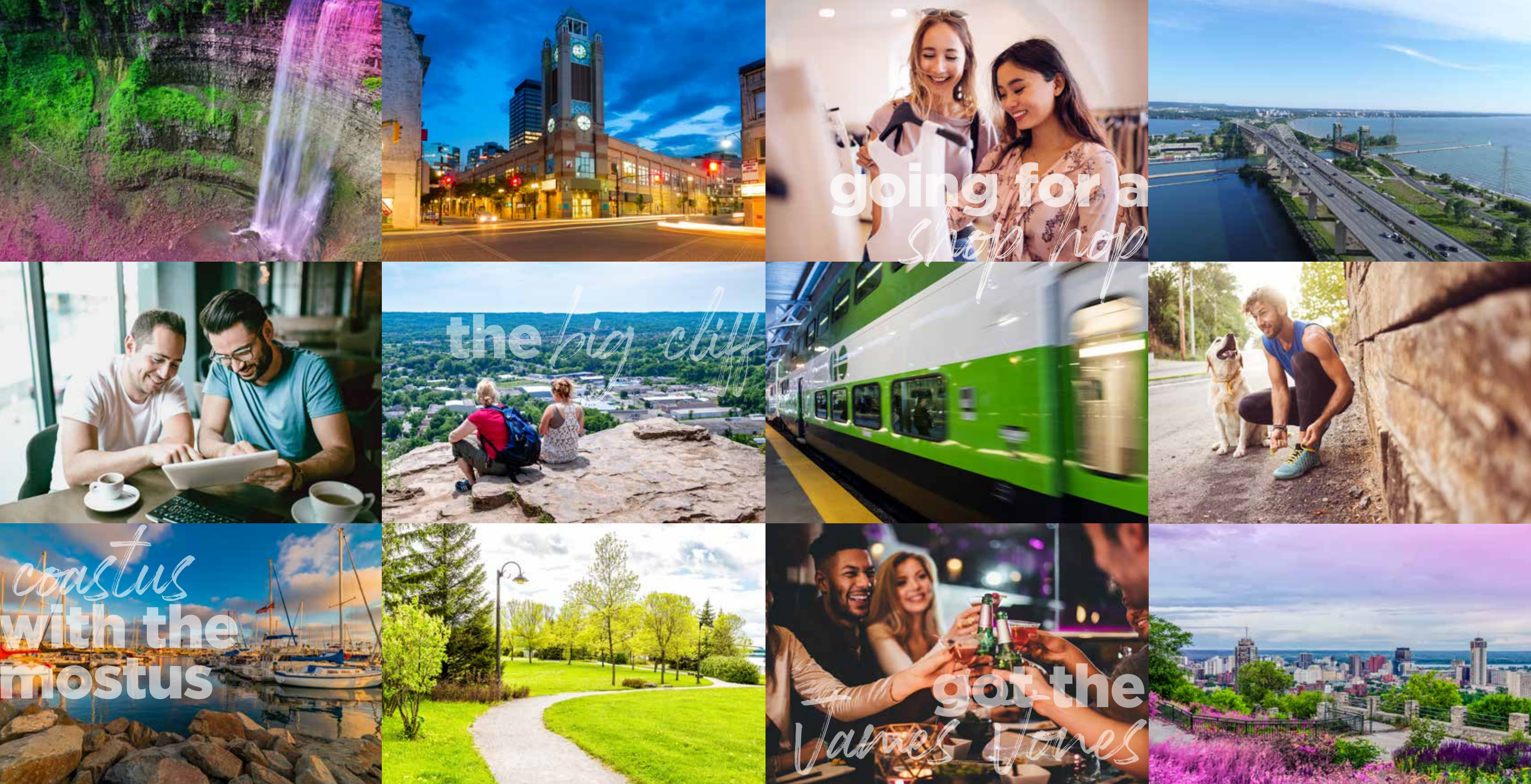




# INSTA POSSIBILITIES







# WELCOME TO #HAMONT

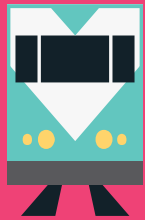
A vibrant community of creators and entrepreneurs has put Hamilton streets on the map and on the tip of tongues across the country. From galleries rich with the works of emerging and breakaway artists,

boutique shops sporting fresh local fashions and restaurants that have the attention of foodies at home and abroad, urban explorers are spoiled for options at the center of this cultural renaissance.

WAKING TO COASTAL MODERN VIEWS IS ONLY THE BEGINNING FOR RESIDENTS AT COMO, WITH QUICK ACCESS TO DOWNTOWN HAMILTON OFFERING THE OPPORTUNITY TO DISCOVER WHY EVERYONE IN THE KNOW IS HEADING TO THE HAMMER.

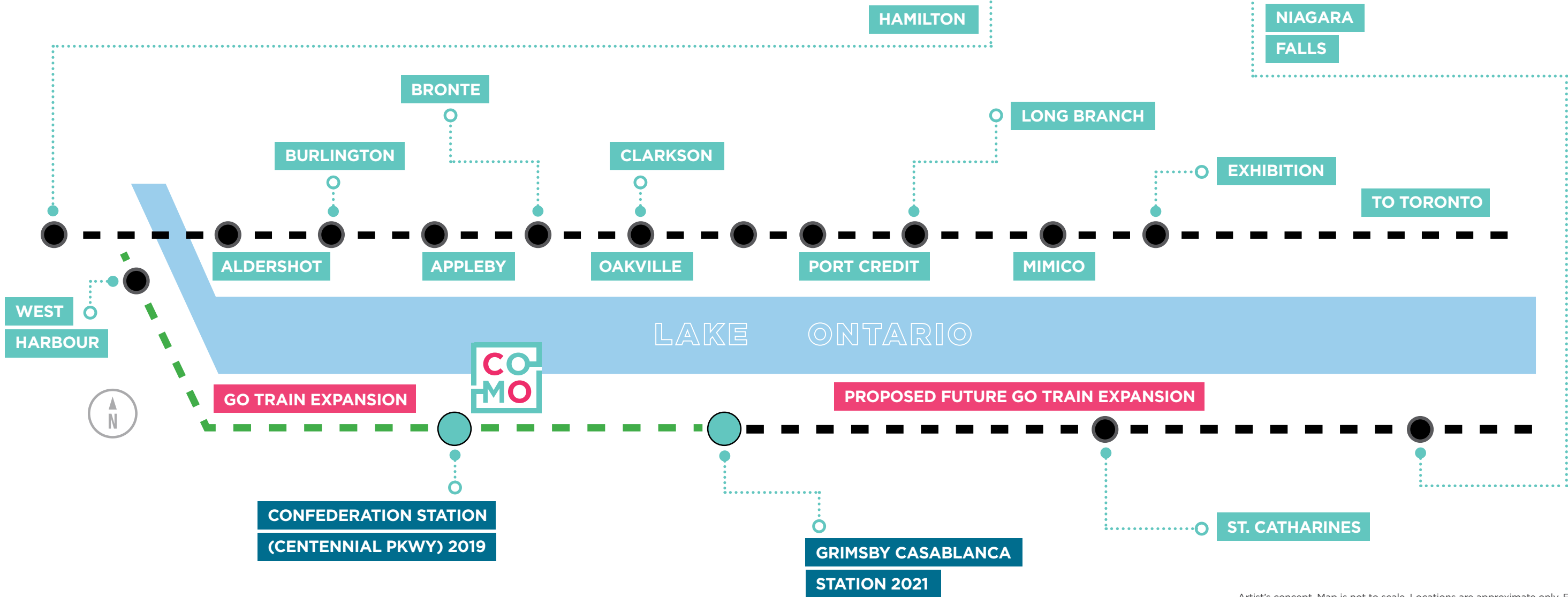


# LET'S GO COMO



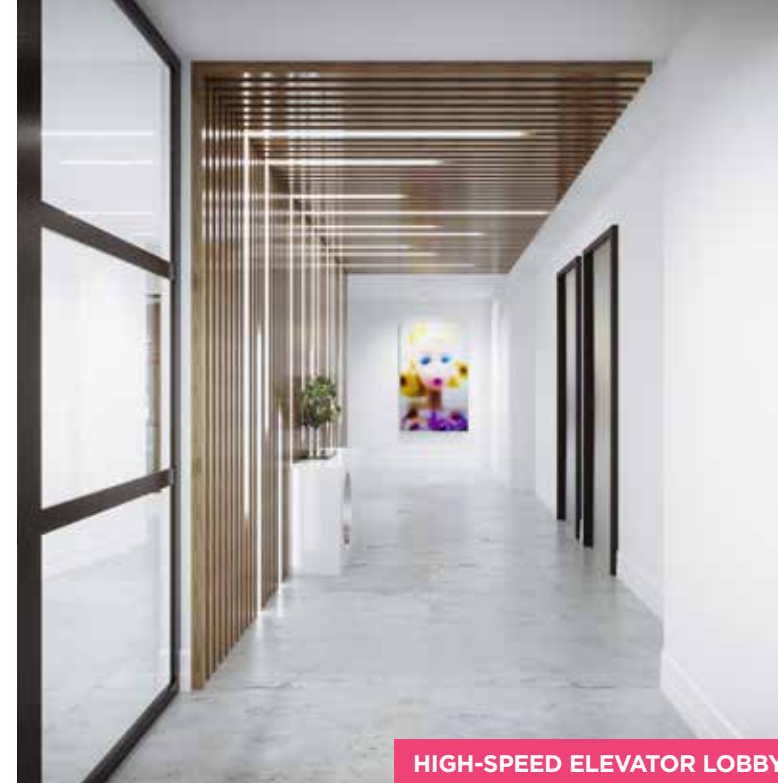
FROM HIGHWAY ACCESS TO TRANSIT  
TO BIKING AND MORE,  
KEEP ON THE GO AT COMO

Traveling around the GTHA and Niagara Region is easy via the QEW and the new Confederation GO Station in Stoney Creek. Explore the natural beauty of the area, from waterfront trails that stretch along the shoreline and the Niagara region to waterfall selfies and winery tours. Open the door to new connections across Toronto and catch the latest game or show. Whether leaving home for your daily commute or your newest adventure, reaching your destination is always quick and easy when you start from CoMo.

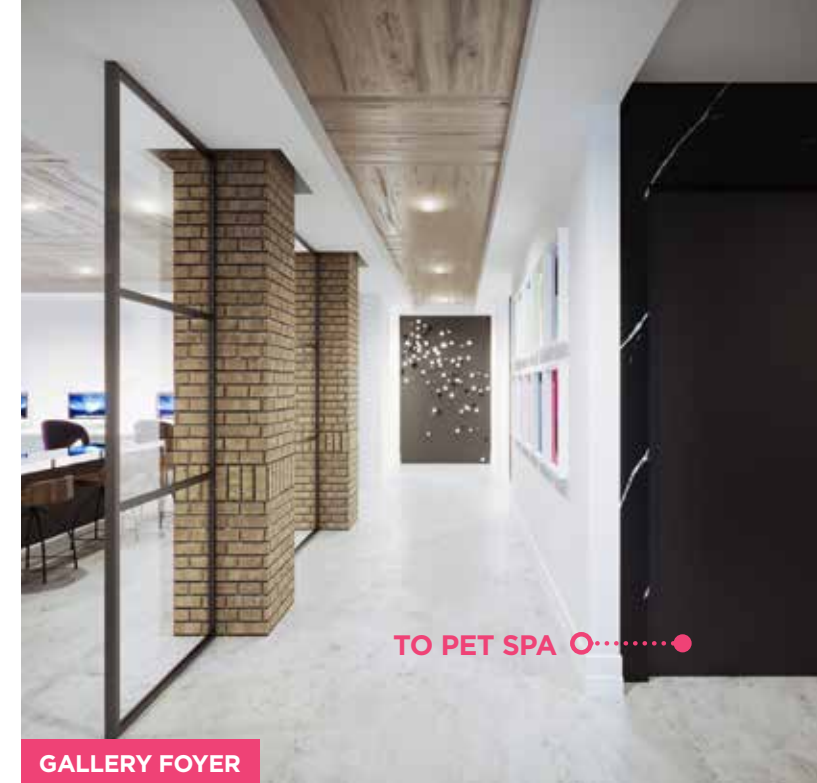




Skip the FoMo by saying yes to CoMo with this unique opportunity to claim your space along the lake. Realize the dream of owning your own place with a space that offers the chance to turn the page on the next chapter of your life.



## HIGH-SPEED ELEVATOR LOBBY



## GALLERY FOYER

TO PET SPA O.....●



Rendering's are artist's concept





Rendering is artist's concept.

# GET #SOCIAL

## CONNECTIONS ARE AT THE HEART OF COMO'S DESIGN

Friends and family may never want to leave when they get a glimpse of your new Smart Suite.™ Thankfully you'll always have space for entertaining, whether hosting and making new connections in our social space or challenging friends

and settling scores in our Players Lounge. There's even space for your doggo to make new friends at CoMo's signature Bark Park and put their best paw forward with visits to our Pet Spa.













Rendering's are artist's concept.



# YOUR SLEEK NEW SMART SUITE™



STEP INTO AN EXCEPTIONAL COLLECTION  
OF SMART MODERN SUITE DESIGNS

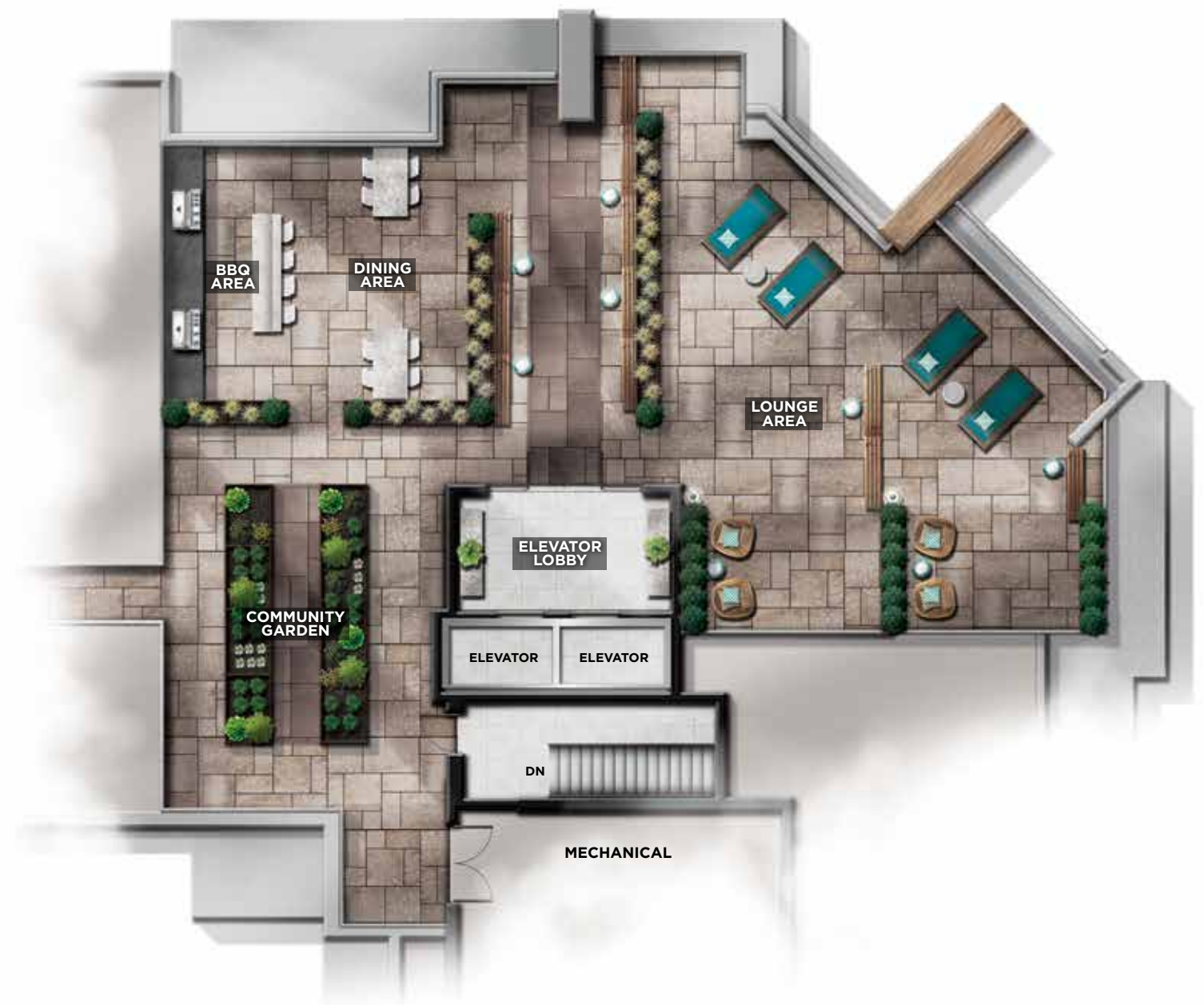
Smart Suite™ spaces offer one and one-plus-den to two-bedrooms extending the coastal modern philosophy and ready to customize with expert assistance from our in-house designer. CoMo offers a wide array of upgraded selections to define your space alongside modern open concept interiors, tall 9' ceilings, gourmet kitchens with breakfast bars and stylish ensuites. Our unique Smart Suite™ design places the focus on sleek and streamlined spaces to make the most of your new home, while open concept floorplans and wide expanses of glass provide spectacular views of the picturesque shoreline.



# THERE'S #NOFOMO

WHEN YOU  
LIVE AT COMO

Lakeside views from your stylish new Smart Suite™ are just the beginning. Take in the coastal vibe from the Sky Lounge and host not-to-be-missed meetups on the Coast Patio overlooking the natural beauty of the surrounding area. Plant fresh roots and cultivate new relationships at our rooftop community garden.

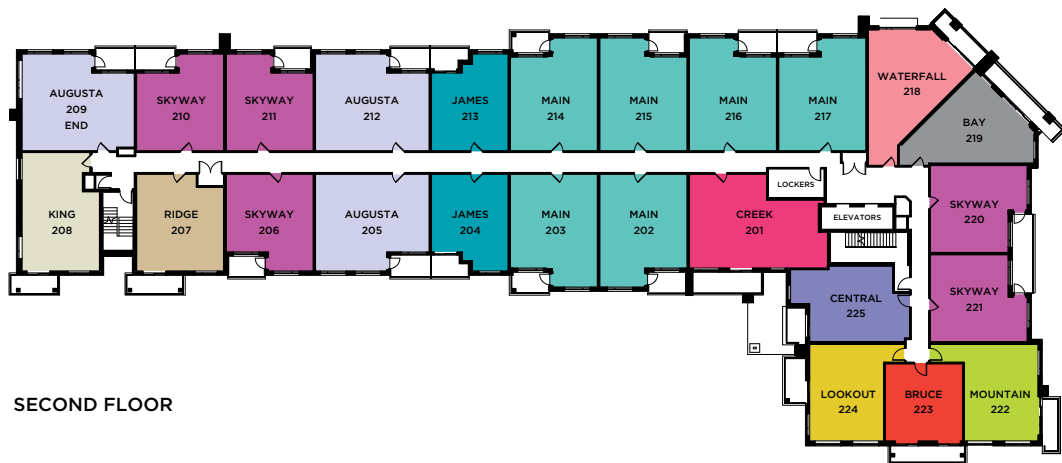


Illustrations are artist's concept. Landscaping is for illustrative purposes only. Details and specifications are subject to change without notice. E. & O.E.

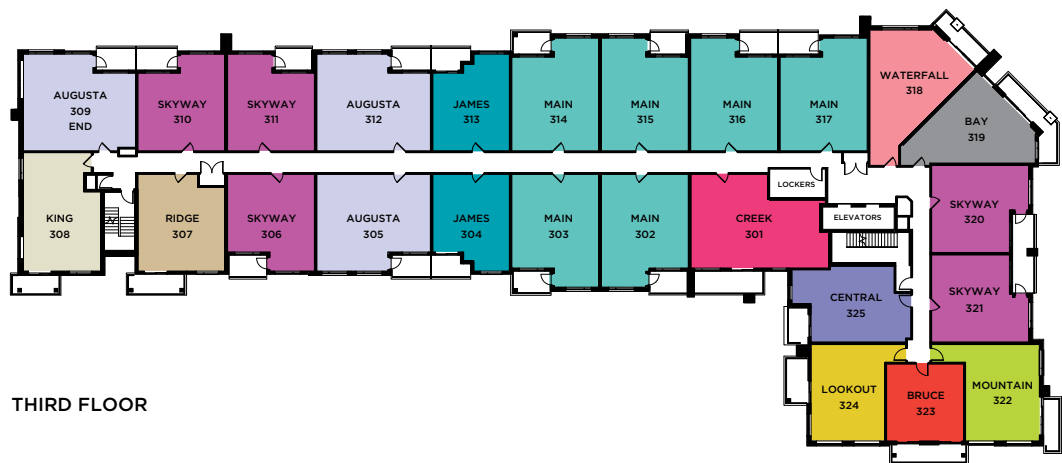




FIRST FLOOR



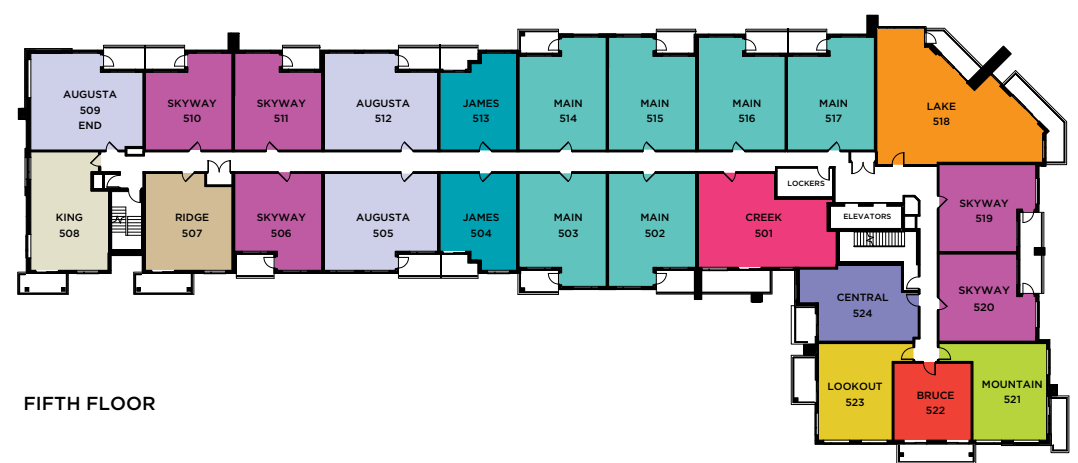
SECOND FLOOR



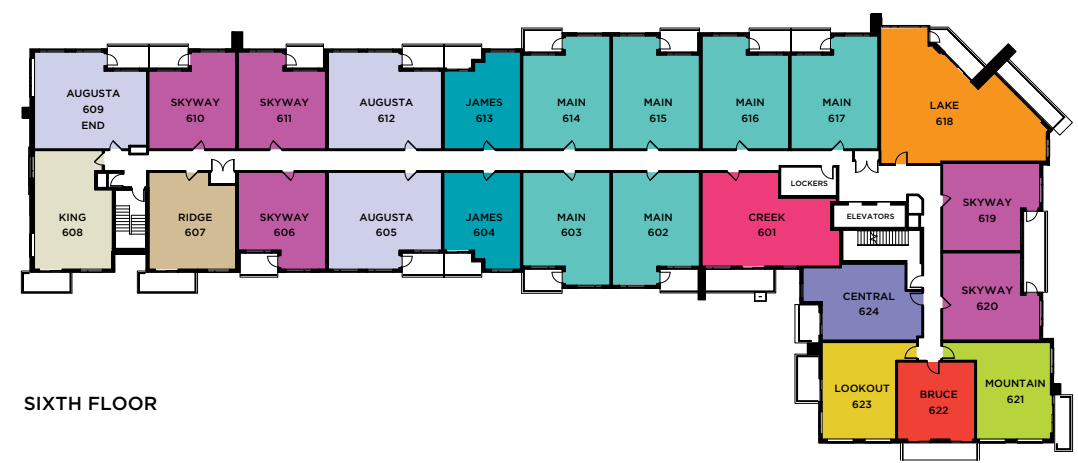
THIRD FLOOR



FOURTH FLOOR



FIFTH FLOOR



SIXTH FLOOR

# SUITE LOCATIONS

## 1 BEDROOM

THE BRUCE THE JAMES THE SKYWAY THE LOOKOUT THE CENTRAL THE BAY THE MOUNTAIN THE RIDGE

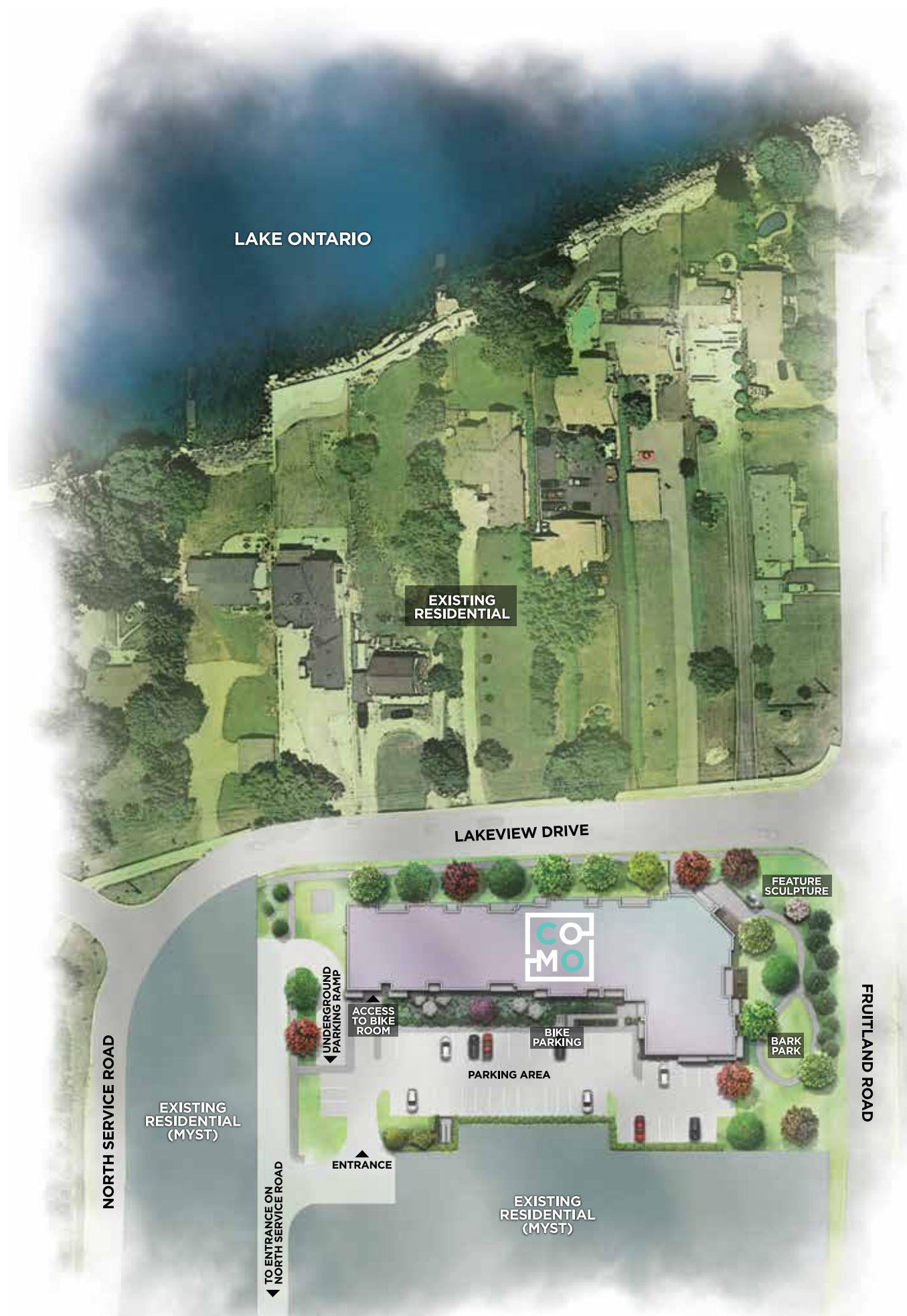
## 1 BEDROOM + DEN

THE MAIN THE WATERFALL

## 2 BEDROOM

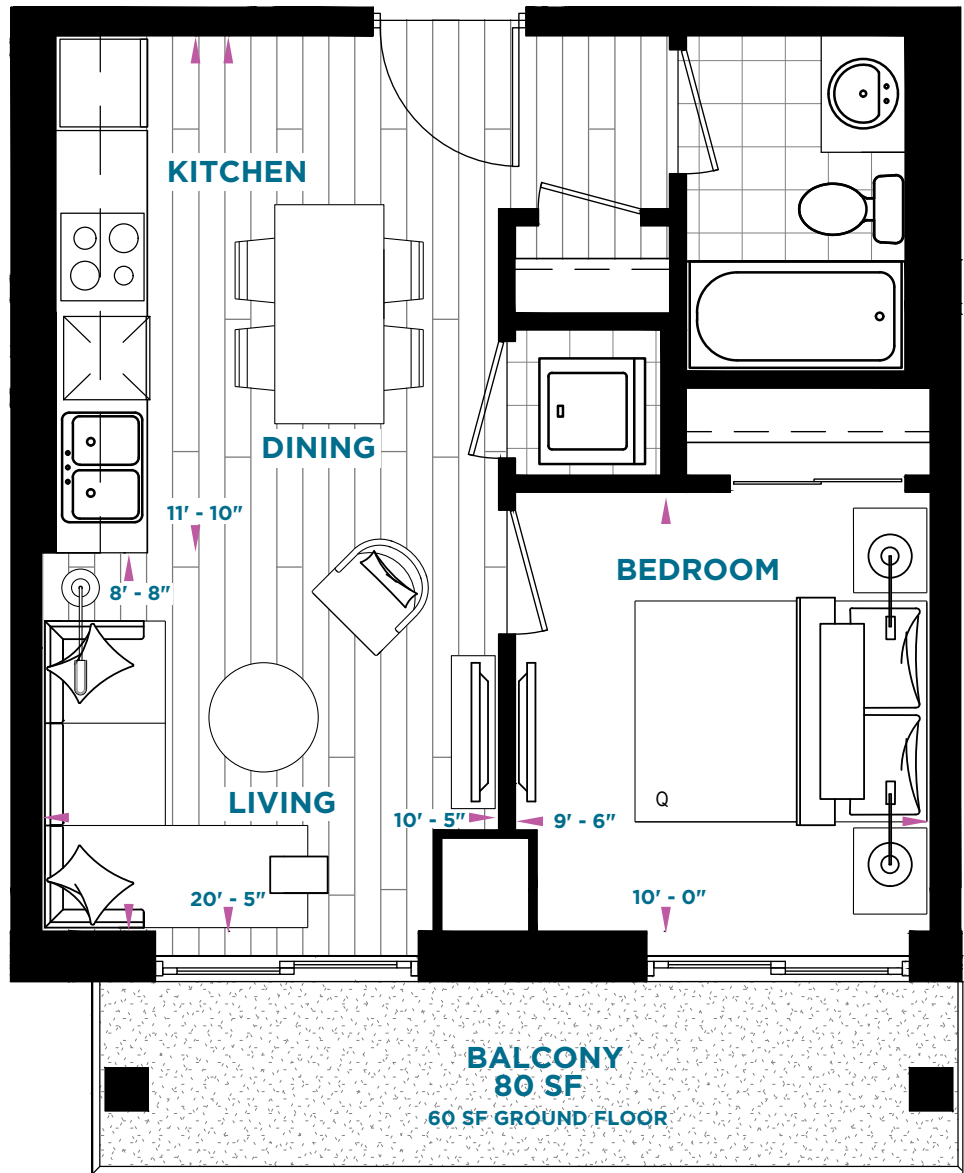
THE KING THE AUGUSTA THE CREEK THE PIER THE LAKE





# THE BRUCE

1 BEDROOM - 552 SQ. FT.  
INTERIOR 472 SQ. FT. | EXTERIOR 80 SQ. FT.\*  
\*GROUND FLOOR SUITE 60 SQ. FT.



FIRST FLOOR



SECOND & THIRD FLOORS



FOURTH - SIXTH FLOORS



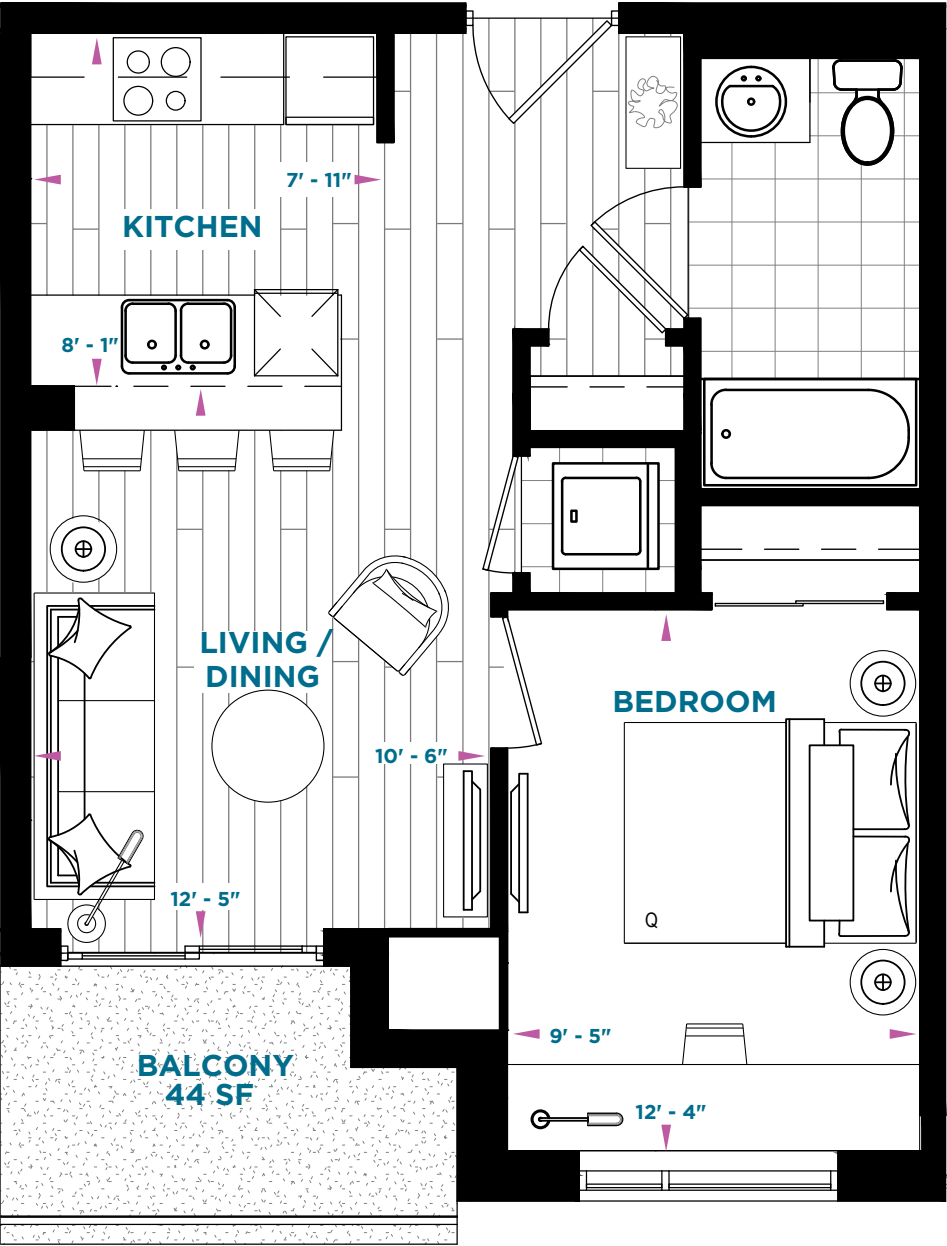
Materials, specifications, and floor plans are subject to change without notice. All floorplans are approximate dimensions. Actual usable floor space may vary from the stated floor area. E. & O.E. May 2019.



# THE JAMES

1 BEDROOM - 585 SQ. FT.

INTERIOR 541 SQ. FT. | EXTERIOR 44 SQ. FT.



FIRST FLOOR



SECOND & THIRD FLOORS



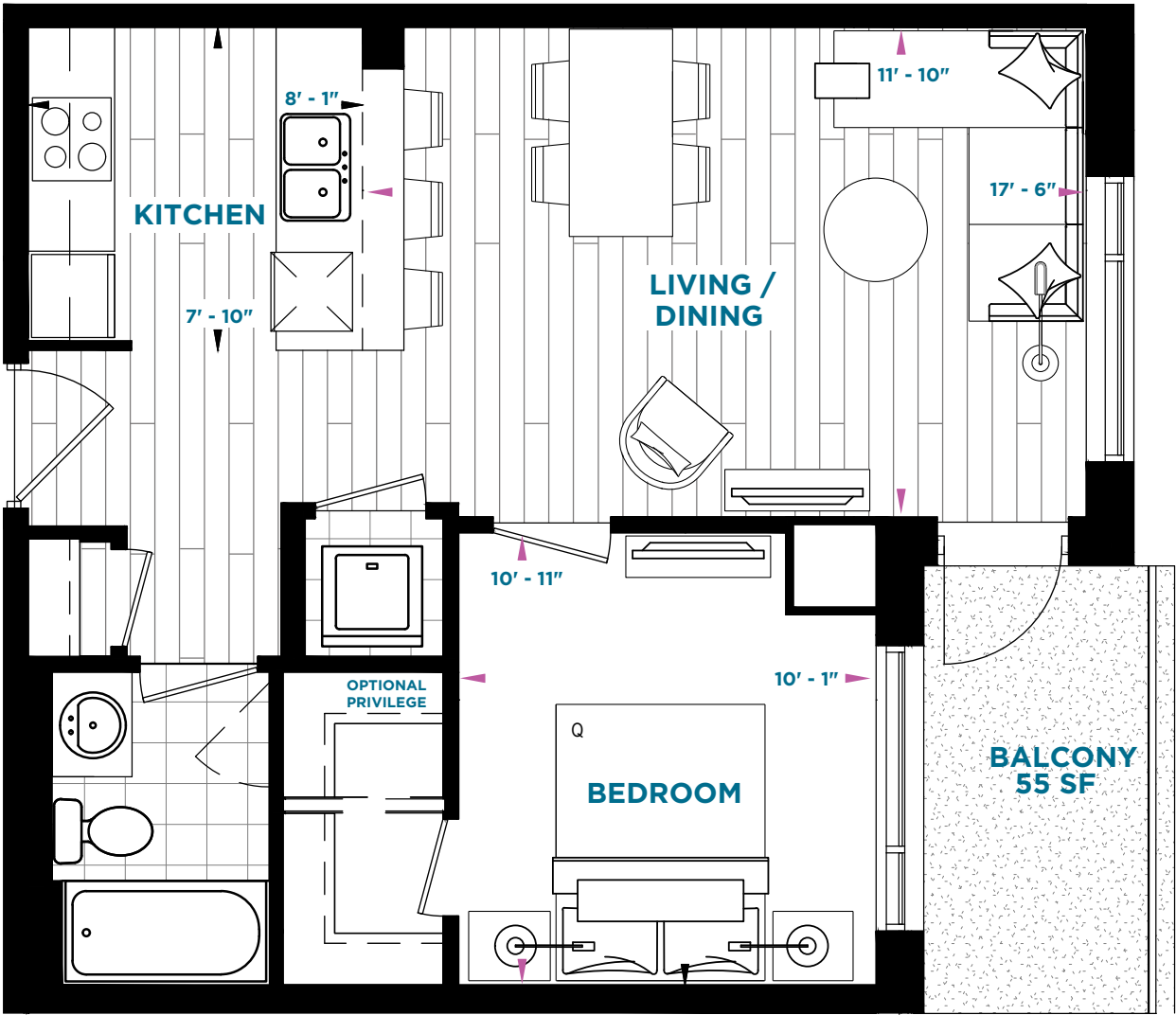
FOURTH - SIXTH FLOORS

Materials, specifications, and floor plans are subject to change without notice. All floorplans are approximate dimensions. Actual usable floor space may vary from the stated floor area. E. & O.E. May 2019.

# THE SKYWAY

1 BEDROOM - 663 SQ. FT.

INTERIOR 608 SQ. FT. | EXTERIOR 55 SQ. FT.



FIRST FLOOR



SECOND & THIRD FLOORS



FOURTH - SIXTH FLOORS

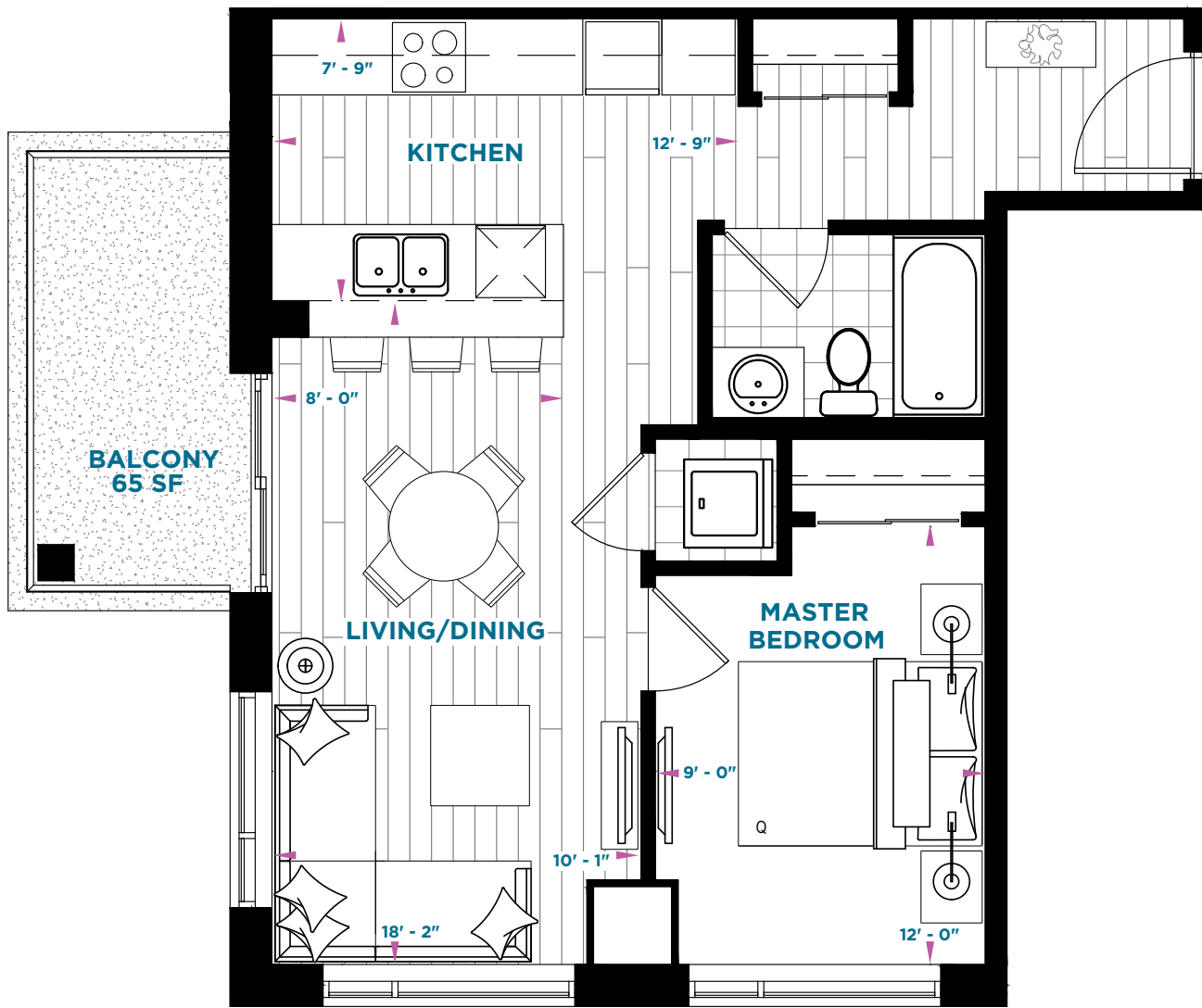
Materials, specifications, and floor plans are subject to change without notice. All floorplans are approximate dimensions. Actual usable floor space may vary from the stated floor area. E. & O.E. May 2019.



THE LOOKOUT

1 BEDROOM - 685 SQ. FT.

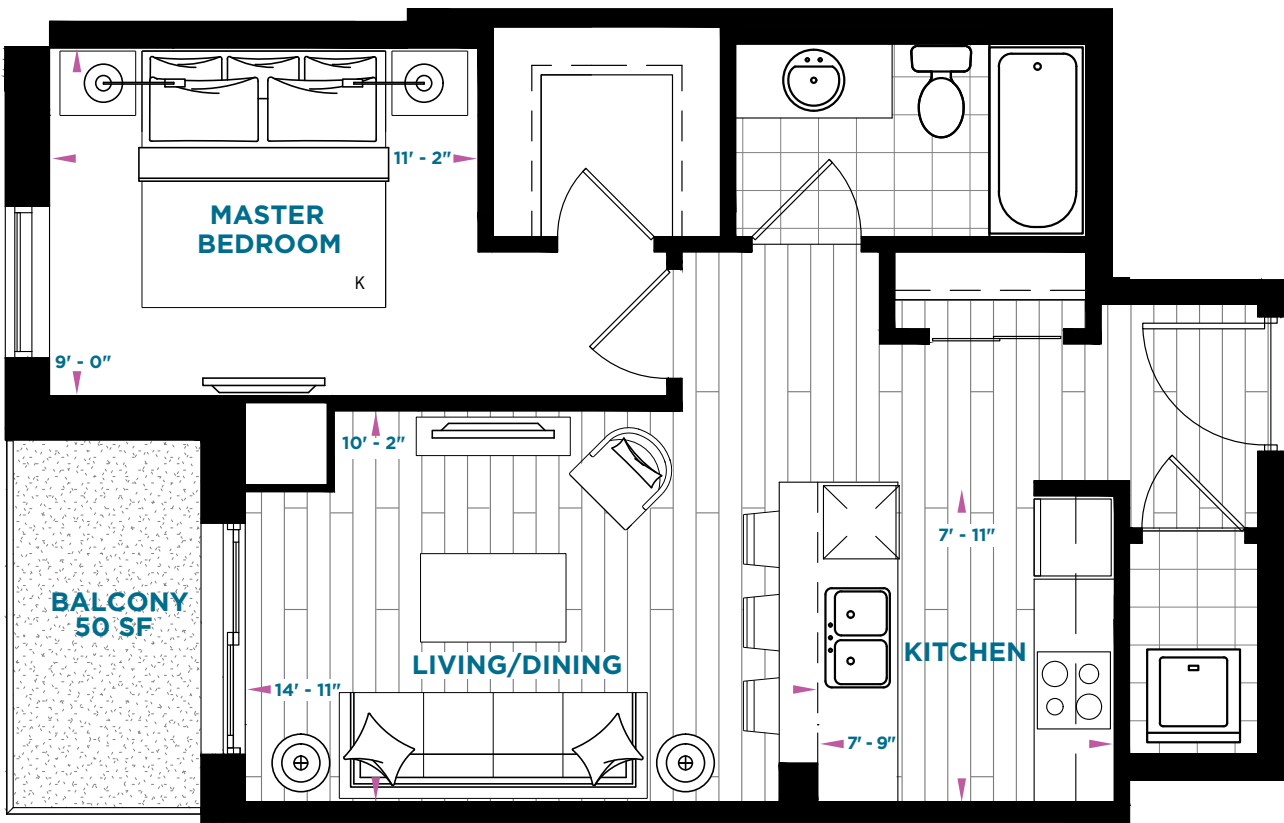
INTERIOR 620 SQ. FT. | EXTERIOR 65 SQ. FT.



THE CENTRAL

1 BEDROOM - 676 SQ. FT.

INTERIOR 626 SQ. FT. | EXTERIOR 50 SQ. FT.



Materials, specifications, and floor plans are subject to change without notice. All floorplans are approximate dimensions. Actual usable floor space may vary from the stated floor area. E. & O.E. May 2019.

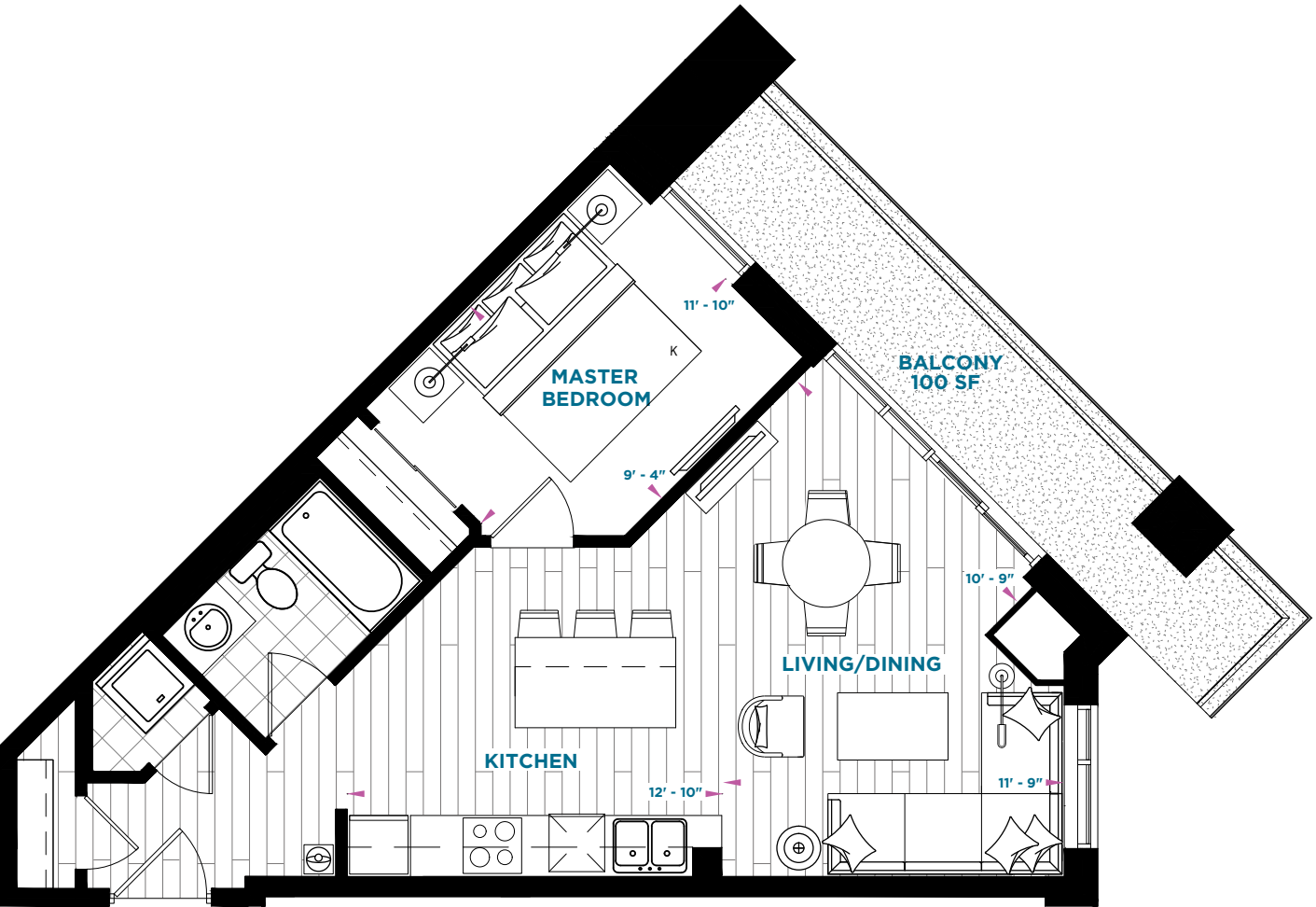
Materials, specifications, and floor plans are subject to change without notice. All floorplans are approximate dimensions. Actual usable floor space may vary from the stated floor area. E. & O.E. May 2019.



THE BAY

1 BEDROOM - 728 SQ. FT.

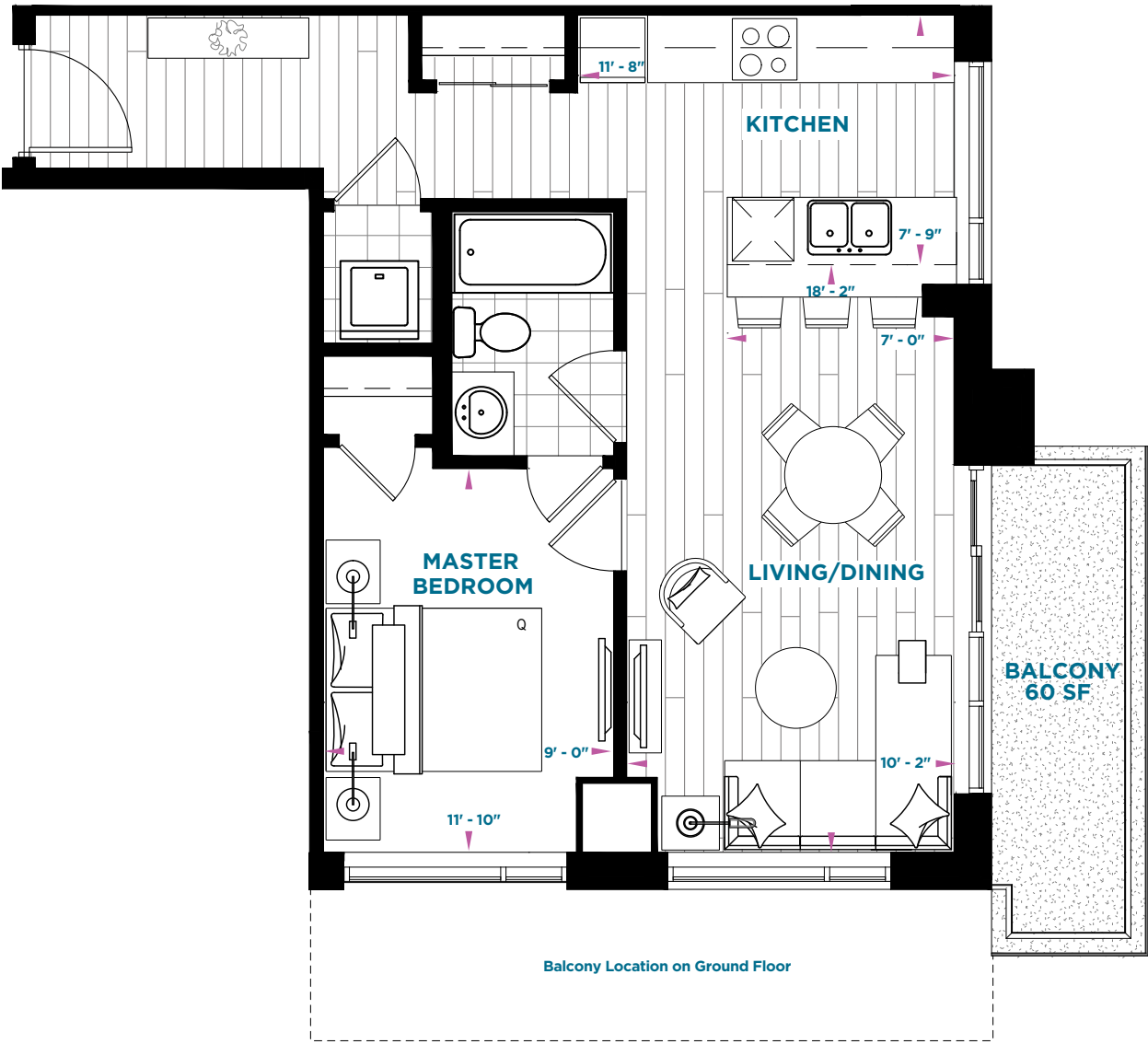
INTERIOR 628 SQ. FT. | EXTERIOR 100 SQ. FT.



THE MOUNTAIN

1 BEDROOM - 703 SQ. FT.

INTERIOR 643 SQ. FT. | EXTERIOR 60 SQ. FT.



Materials, specifications, and floor plans are subject to change without notice. All floorplans are approximate dimensions. Actual usable floor space may vary from the stated floor area. E. & O.E. May 2019.

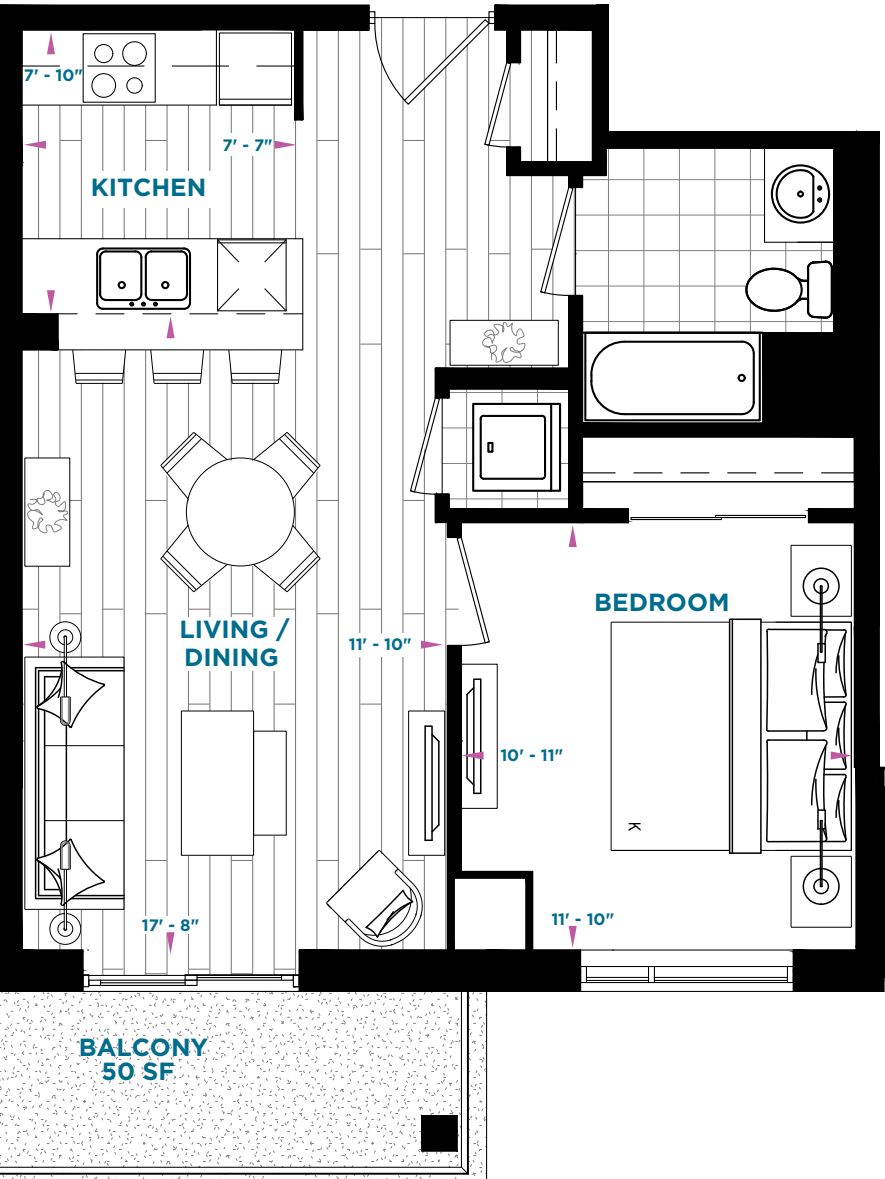
Materials, specifications, and floor plans are subject to change without notice. All floorplans are approximate dimensions. Actual usable floor space may vary from the stated floor area. E. & O.E. May 2019.



THE RIDGE

1 BEDROOM - 735 SQ. FT.

INTERIOR 685 SQ. FT. | EXTERIOR 50 SQ. FT.



SECOND & THIRD FLOORS



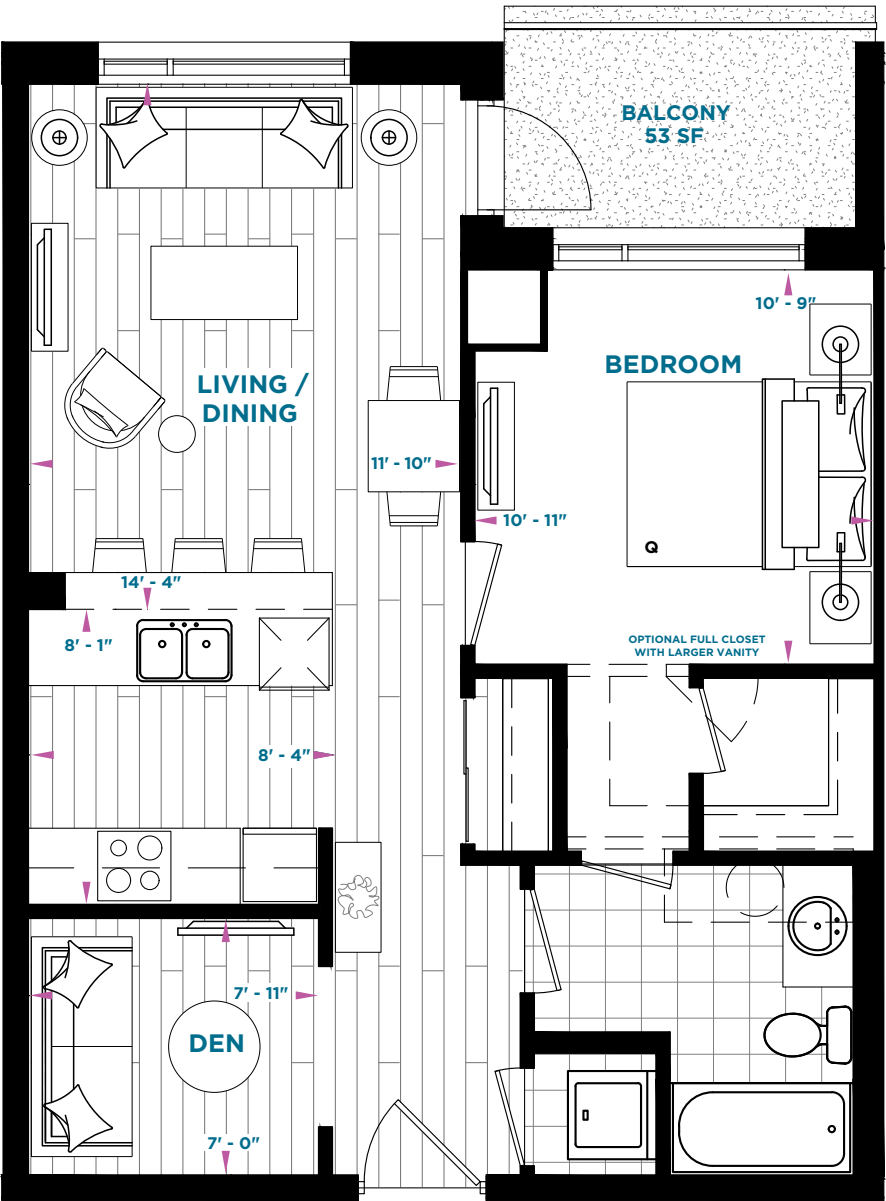
FOURTH - SIXTH FLOORS

Materials, specifications, and floor plans are subject to change without notice. All floorplans are approximate dimensions. Actual usable floor space may vary from the stated floor area. E. & O.E. May 2019.

THE MAIN

1 BEDROOM + DEN - 765 SQ. FT.

INTERIOR 712 SQ. FT. | EXTERIOR 53 SQ. FT.



FIRST FLOOR



SECOND & THIRD FLOORS



FOURTH - SIXTH FLOORS

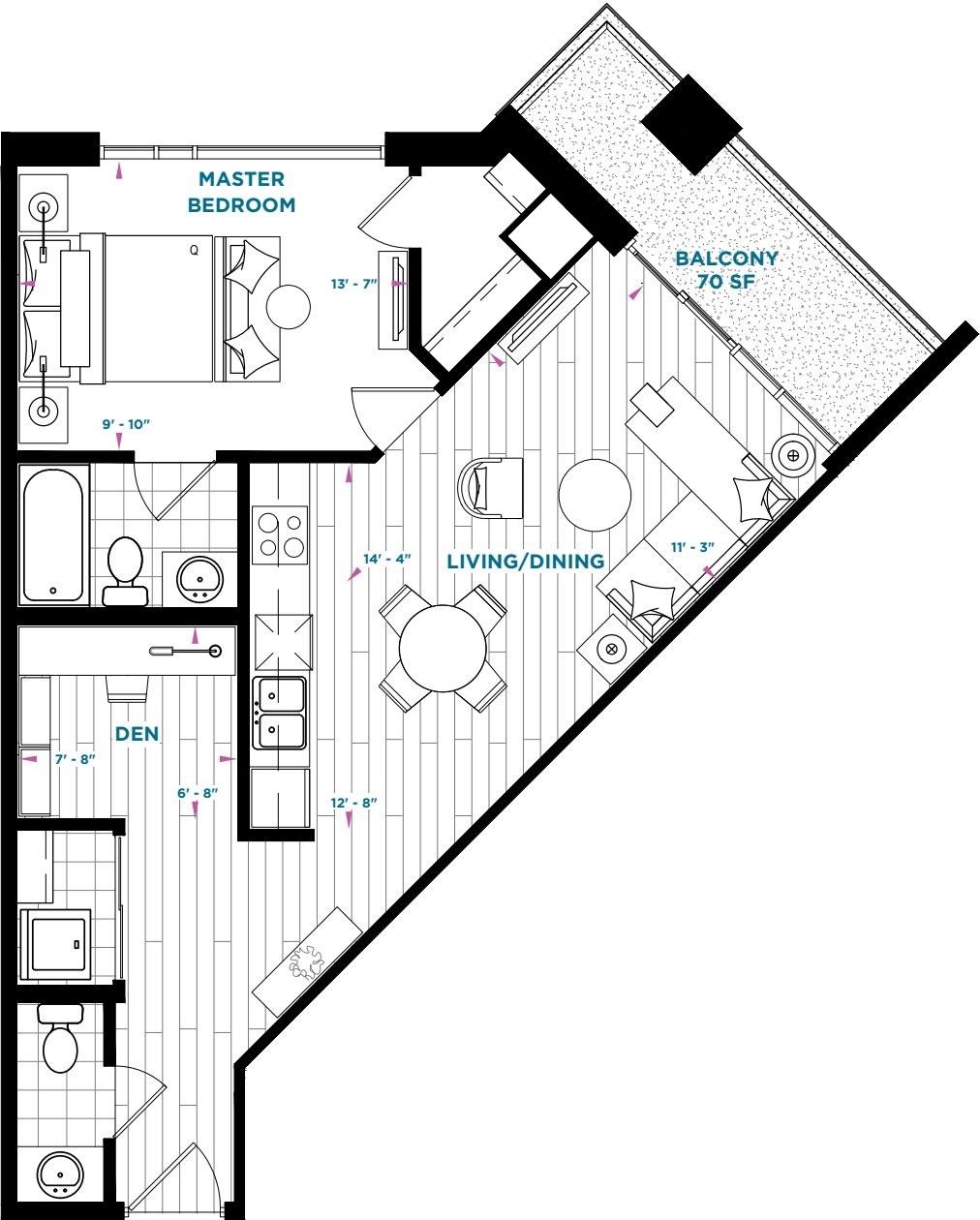
Materials, specifications, and floor plans are subject to change without notice. All floorplans are approximate dimensions. Actual usable floor space may vary from the stated floor area. E. & O.E. May 2019.



THE WATERFALL

1 BEDROOM + DEN - 792 SQ. FT.

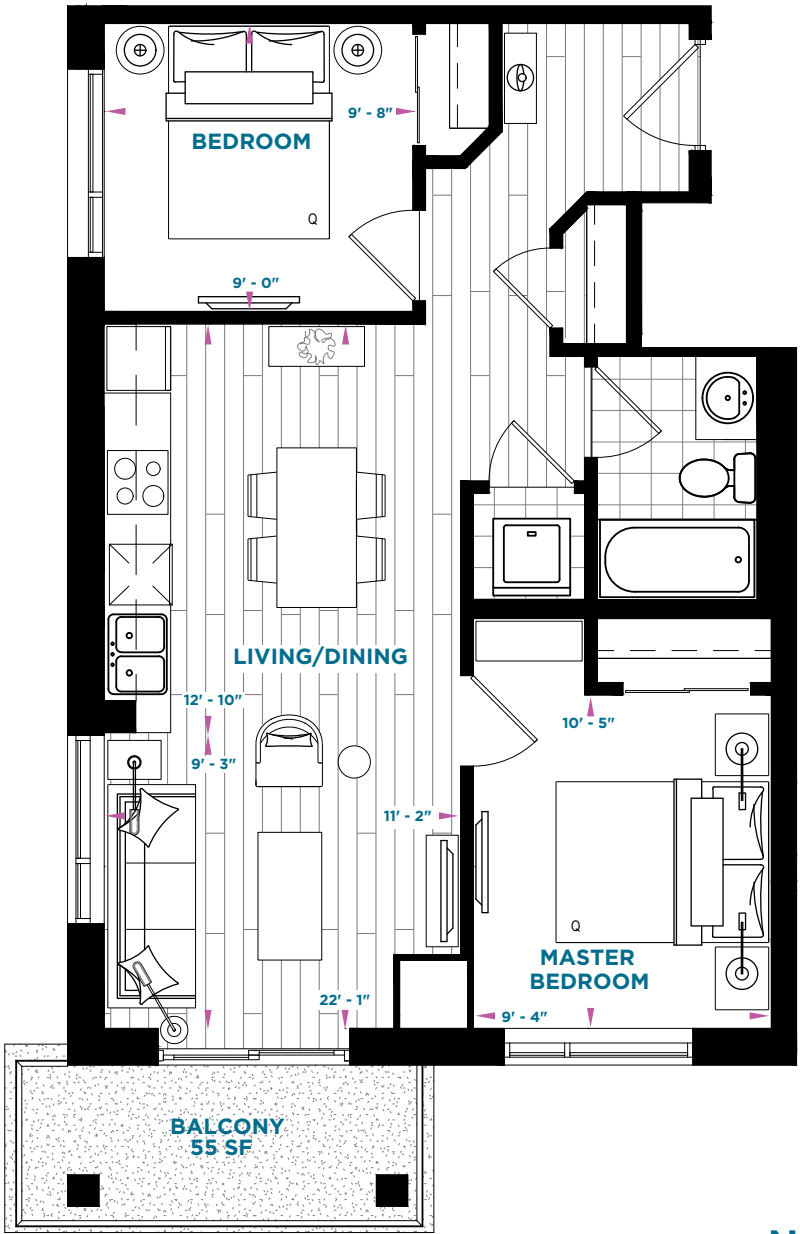
INTERIOR 722 SQ. FT. | EXTERIOR 70 SQ. FT.



THE KING

2 BEDROOM - 793 SQ. FT.

INTERIOR 738 SQ. FT. | EXTERIOR 55 SQ. FT.



Materials, specifications, and floor plans are subject to change without notice. All floorplans are approximate dimensions. Actual usable floor space may vary from the stated floor area. E. & O.E. May 2019.

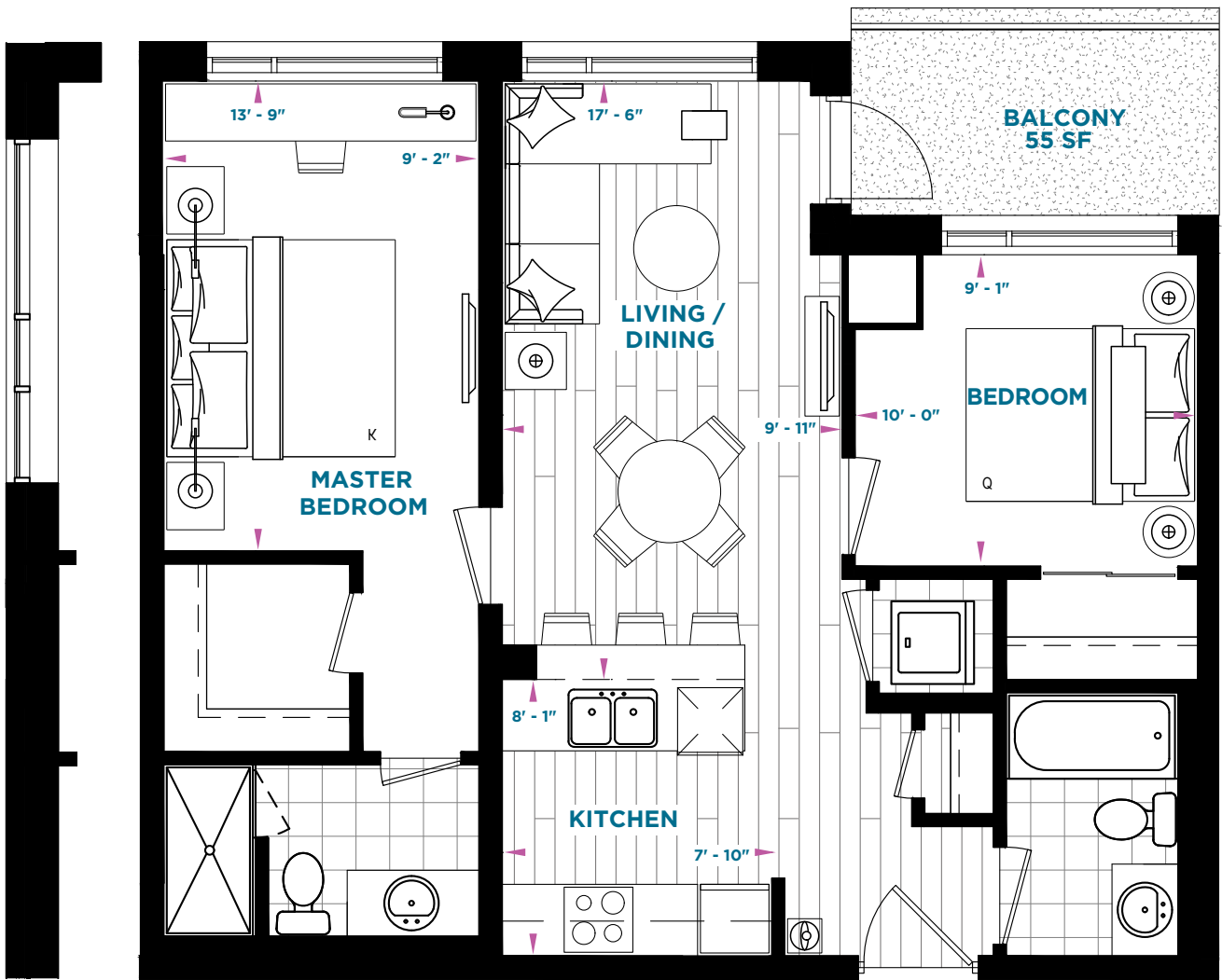
Materials, specifications, and floor plans are subject to change without notice. All floorplans are approximate dimensions. Actual usable floor space may vary from the stated floor area. E. & O.E. May 2019.



THE AUGUSTA

2 BEDROOM - 861 SQ. FT.

INTERIOR 806 SQ. FT. | EXTERIOR 55 SQ. FT.



THE  
AUGUSTA  
END



FIRST FLOOR



SECOND & THIRD FLOORS



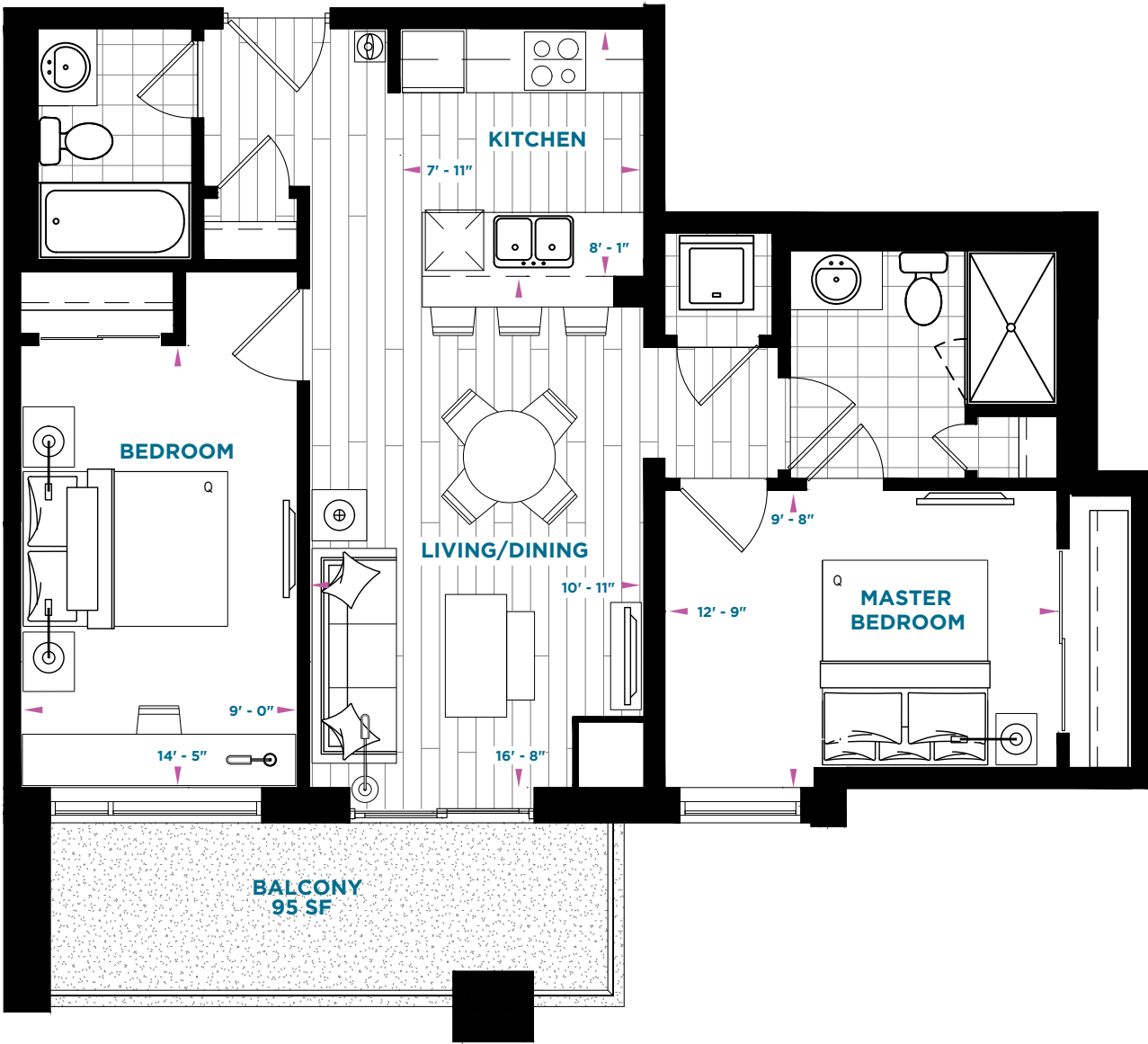
FOURTH - SIXTH FLOORS



THE CREEK

2 BEDROOM - 964 SQ. FT.

INTERIOR 869 SQ. FT. | EXTERIOR 95 SQ. FT.



SECOND & THIRD FLOORS



FOURTH - SIXTH FLOORS



Materials, specifications, and floor plans are subject to change without notice. All floorplans are approximate dimensions. Actual usable floor space may vary from the stated floor area. E. & O.E. May 2019.

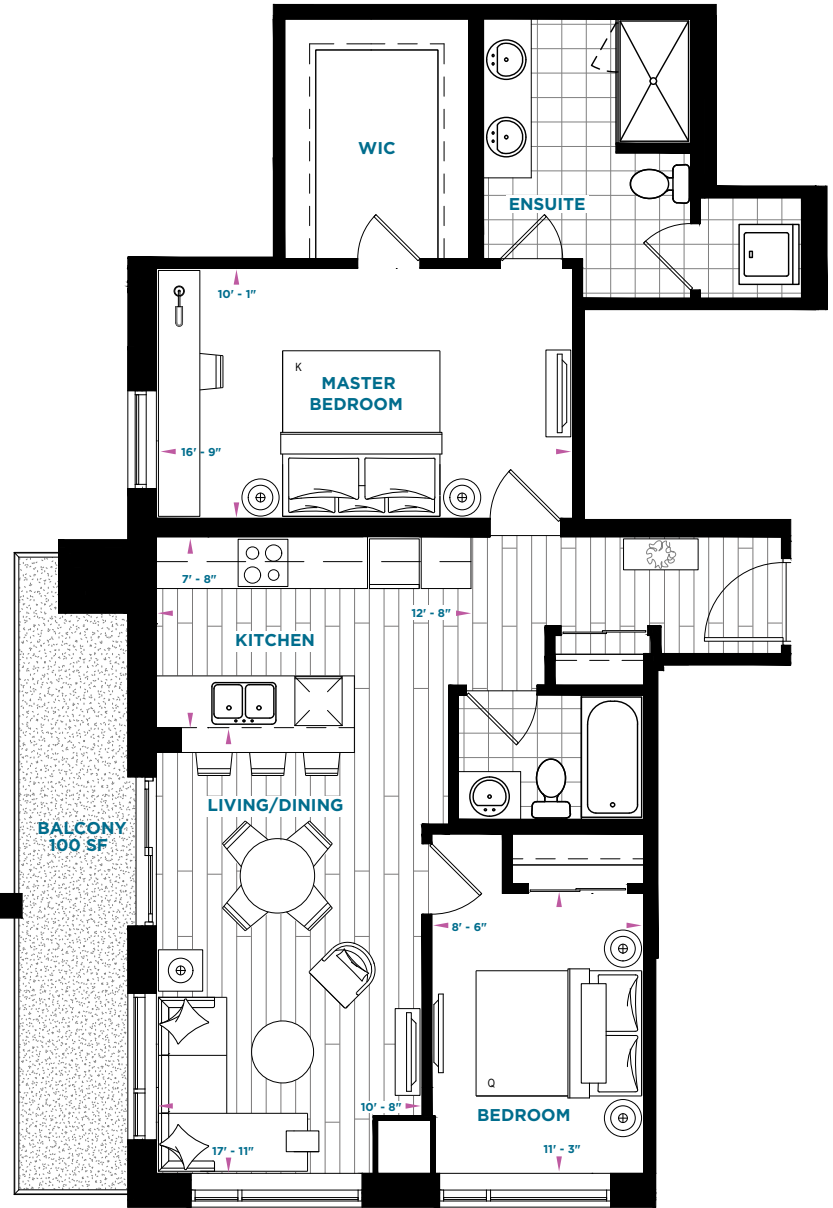
Materials, specifications, and floor plans are subject to change without notice. All floorplans are approximate dimensions. Actual usable floor space may vary from the stated floor area. E. & O.E. May 2019.



# THE PIER

2 BEDROOM - 1,156 SQ. FT.

INTERIOR 1,056 SQ. FT. | EXTERIOR 100 SQ. FT.



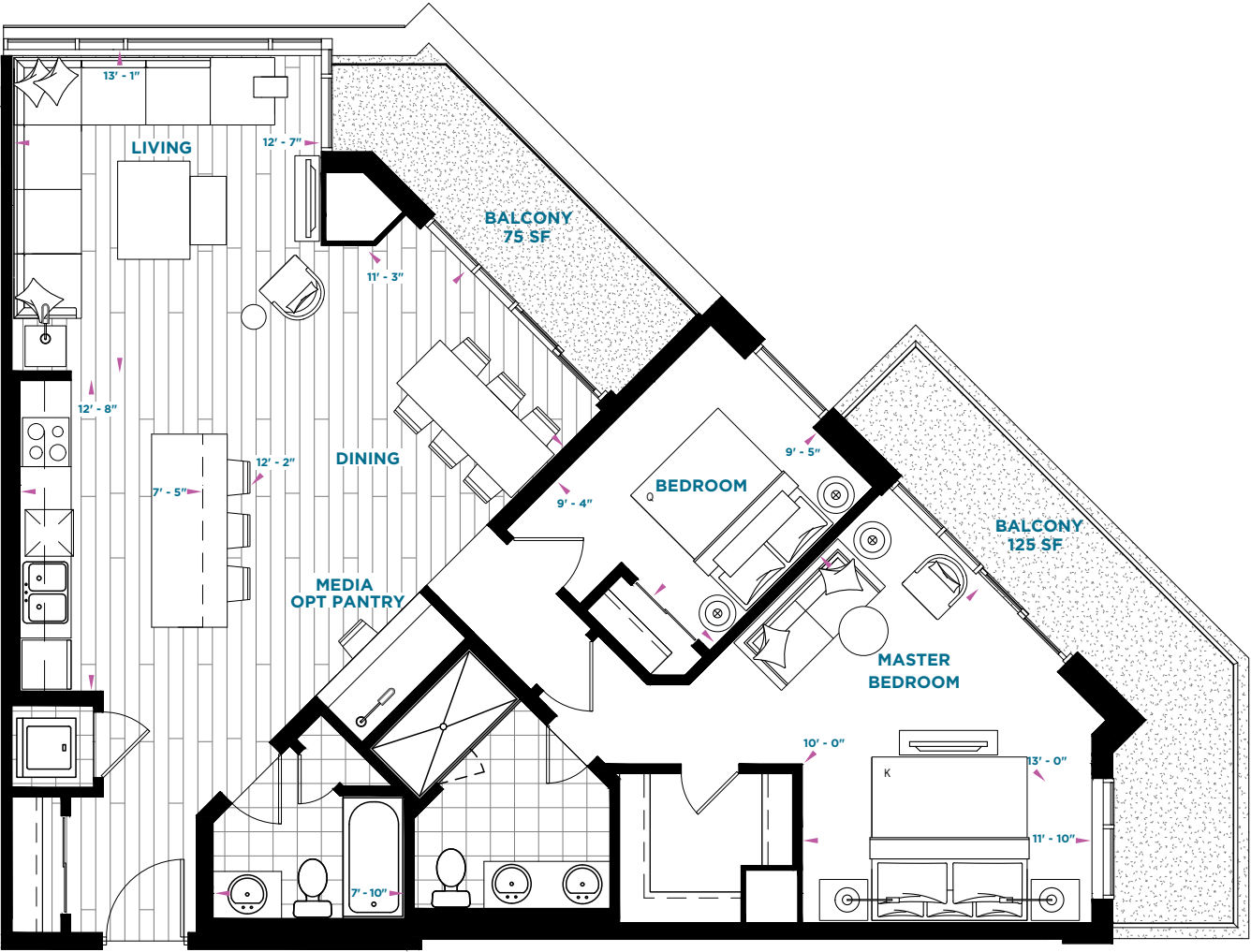
FIRST FLOOR

Materials, specifications, and floor plans are subject to change without notice. All floorplans are approximate dimensions. Actual usable floor space may vary from the stated floor area. E. & O.E. May 2019.

# THE LAKE

2 BEDROOM - 1,438 SQ. FT.

INTERIOR 1,238 SQ. FT. | EXTERIOR 200 SQ. FT.



FOURTH - SIXTH FLOORS

Materials, specifications, and floor plans are subject to change without notice. All floorplans are approximate dimensions. Actual usable floor space may vary from the stated floor area. E. & O.E. May 2019.



# BUILDING ON 50 PLUS YEARS OF EXPERIENCE

Having been born into the business of home building and immersing myself in the culture, I have interacted with many home buyers who've all had one dream - that of living by the lake. Like all good things in life, this dream has either been too expensive or simply very hard to find. But today, I can say with great pride, Homes by DeSantis will make this dream a reality. After intense market research and collaborating with some of the industry's most renowned names, Homes by DeSantis is proud to present our latest condominium community near the shores of Lake Ontario in Stoney Creek - COMO. Right from the clear blue water, the promise of sun and fun, to a sumptuous home, this lakeshore hot spot draws its inspiration from the hip West Coast. With its 140 condominium residences, we believe COMO will fulfill many dreams. I say this emphatically because Homes by DeSantis has been building homes and communities for over five decades. In these years, we've built over 10,000 homes. Whether it's a live-work town, condominium suite or single family residence, each and every home we build showcases our dedication and commitment. This in turn has earned us customer loyalty beyond compare, with repeat buyers and generations of DeSantis homeowners. Como is no different. It is a product of our passion and our desire to satisfy your dream. I'm confident that COMO will please you.



[homesbydesantis.com](http://homesbydesantis.com)



Gabriel DeSantis, President



461 Green Road, Suite #12  
Stoney Creek  
**905.930.7446**  
[como@homesbydesantis.com](mailto:como@homesbydesantis.com)



**CoMoCondos.com**