

239 LORMONT BLVD, STONEY CREEK

MOVE IN READY



on the ridge
STONEY CREEK



LISTED AT \$1,100,000



2 Car Garage



4 Bedrooms



2.5 Bathrooms



2,345 SQ.FT.

PROPERTY DETAILS:

- Freehold 2-storey end unit townhome
- Lot: 26' X 96' X '47' (irregular)

PRICING DETAILS:

- Purchase Price: \$1,100,000
- Deposit: \$50,000

CONTACT OUR SALES TEAM FOR A TOUR

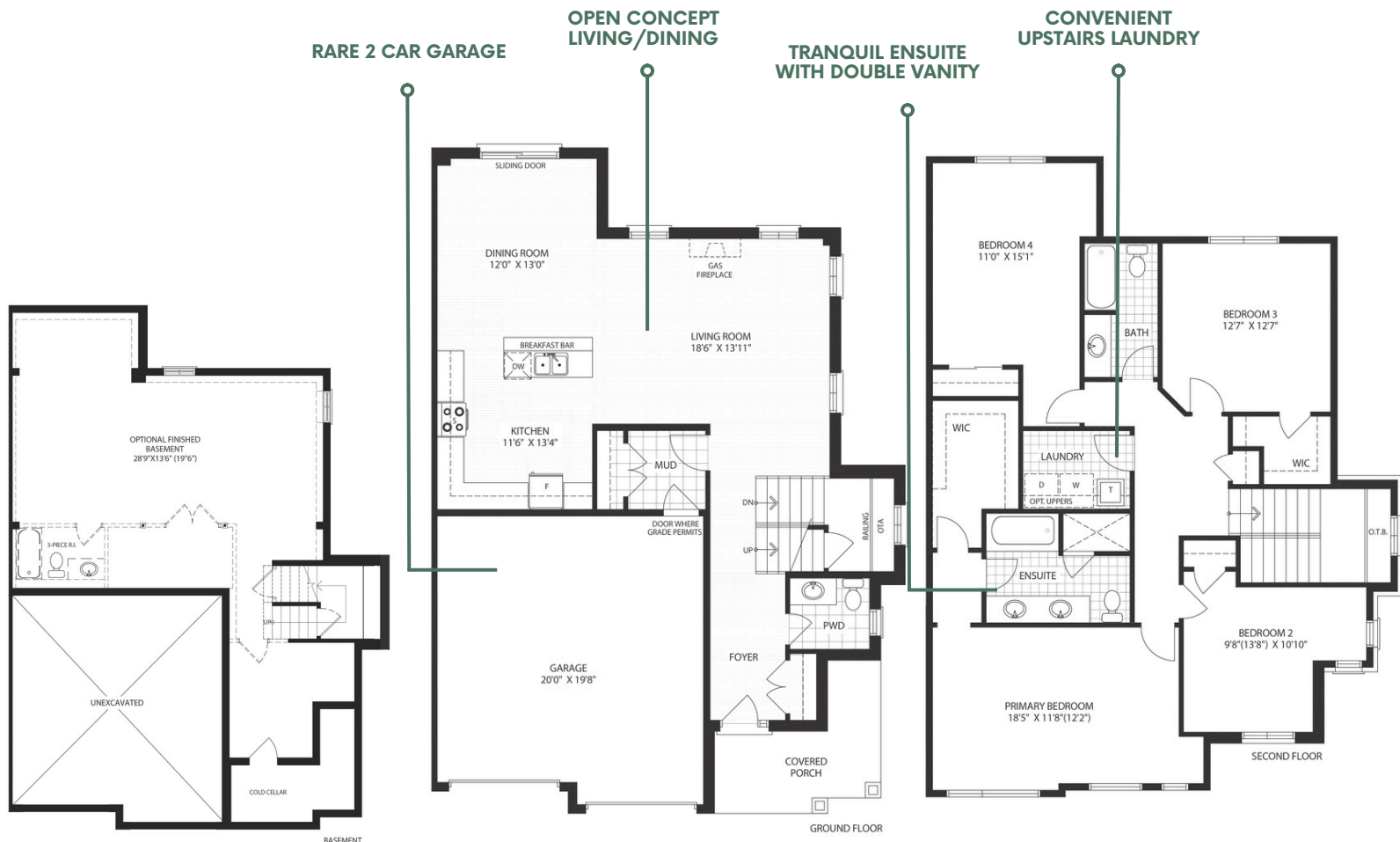
📞 289-670-1999

✉️ homes@desantishomes.com



KEY DESIGN INCENTIVES:

- Over \$80,000 in design upgrades included in purchase price
- Luxury vinyl plank flooring throughout main floor
- Calacatta Nuvo quartz countertop and backsplash in kitchen
- Breakfast bar in kitchen
- Upgraded cabinetry, quartz, smooth ceilings throughout
- Laundry room on second floor with upper cabinetry
- Full oak stairs with custom stain and square black spindels
- Primary ensuite with double vanity, built-in bathtub, and full glass shower
- Appliances: Chimney style hood fan in kitchen and gas fireplace in living area
- DeSantis Homes Smart-Suite™ Home Technology integration
- Bonus package (includes all listed design features)

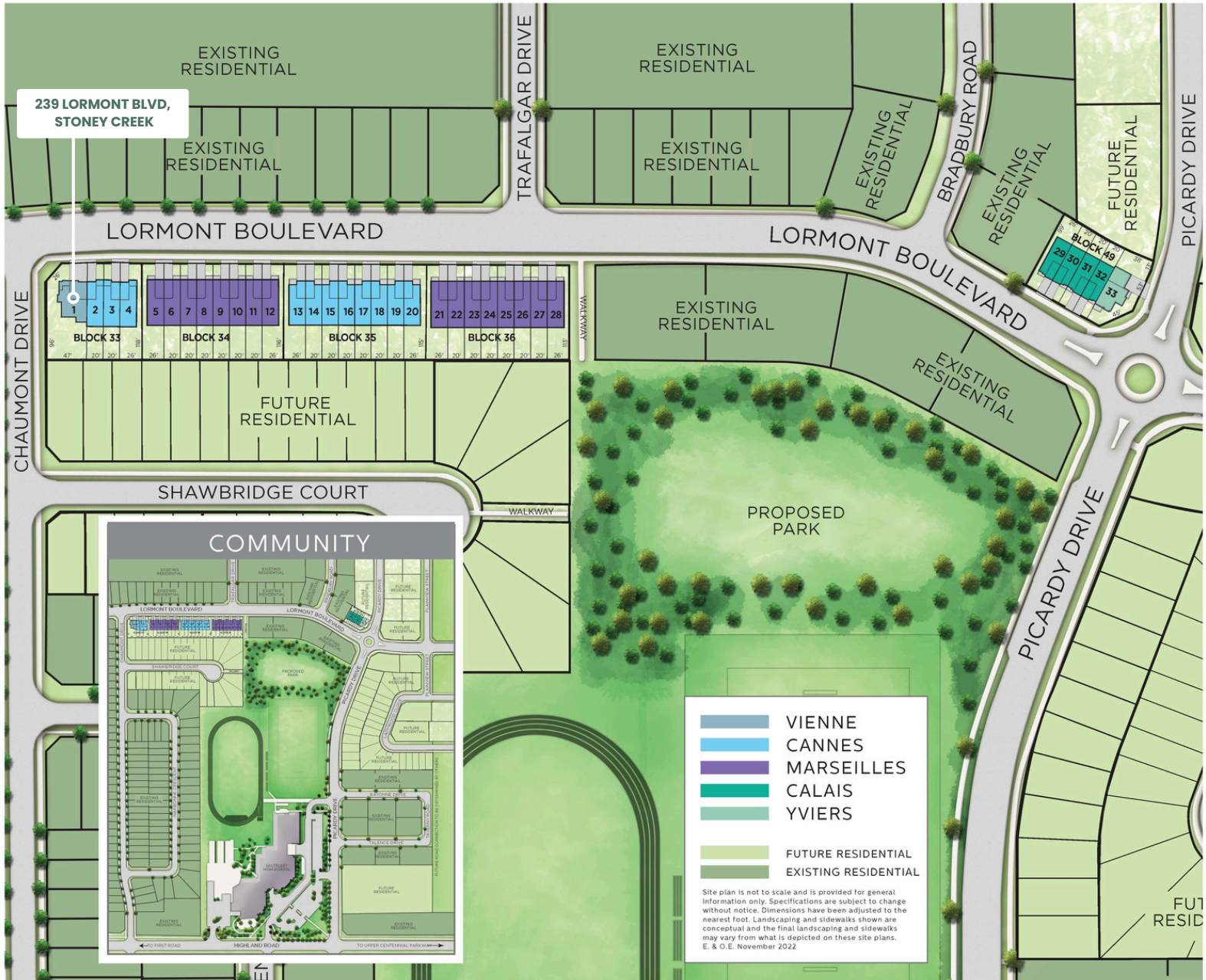






on the ridge
STONEY CREEK

SITE PLAN



CONTACT INFORMATION:

Sales Representatives On-Site:

Alyssa DeSantis, Chiara Campli, Mike Estey & Kelley Milan

Phone: 289-670-1999

Email: homes@desantishomes.com

Presentation Centre: 13 Windward Drive, Suite 502, Grimsby ON
E&O.



BONUS PACKAGE

INCLUDED FEATURES!

IMPRESSIVE INTERIORS

- Nine (9') feet high ceilings throughout main floor
- Shaker-style interior passage doors with satin nickel interior levers and hinges
- Luxury Vinyl Plank flooring throughout main floor including foyer, living room, kitchen and dinette (as per plan)

GOURMET KITCHEN

- Quartz Countertops in Kitchen
- Full depth fridge upper with 1 or 2 gables (as per plan)
- 100cm, extended height uppers to kitchen adding extra height and storage

SPA INSPIRED BATH

- 12" x 24" tiles in bathrooms and laundry
- Step-in showers to have glass shower door (as per plan)

SMART SUITE[™] - HOME TECHNOLOGY WITH GOOGLE HOME & ALEXA INTEGRATION

- Smart front door lock with touchpad
- Augmented home security with integrated doorbell camera with two-way talk and motion detection
- 3 Swidget Smart Switches to monitor air quality, home security and control home lighting
- Convenient USB power plugs in Kitchen and Primary Bedroom
- Smart Thermostat

ENHANCED FEATURES

- High efficiency air conditioning
- Premium quality, modern style metal roll-up insulated garage doors
- Rough-in for future electric vehicle charging station, consisting of a rough-in for a conduit connected to an electrical box in the garage, and 200 amp electrical service
- 3 Piece rough-in, in basement